

FABRIC OPTIONS

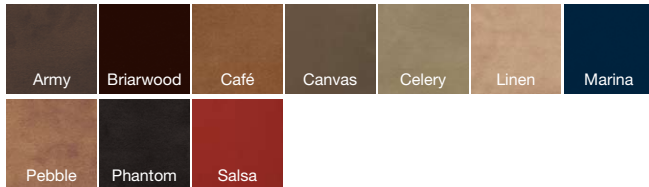


FABRICS

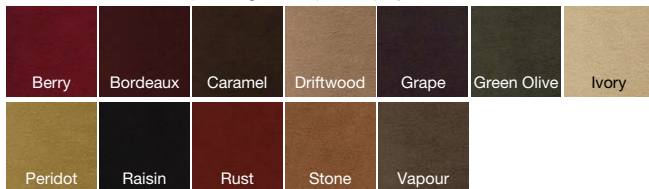
IRRESISTIBLE Grade 10 (cleaning code WS) 100% polyester



MONARCH Grade 10 (cleaning code W) 100% polyester



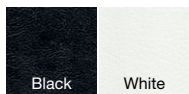
URBAN Grade 10 (cleaning code D) 100% polyester



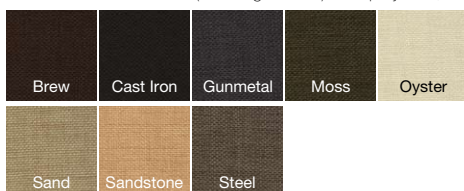
ABERDEEN Grade 20 (cleaning code WS) 100% polyester



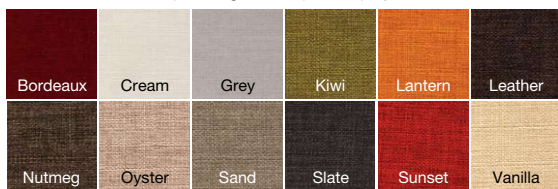
EXECUTIVE VINYL* Grade 20 (cleaning code WS) 100% PVC



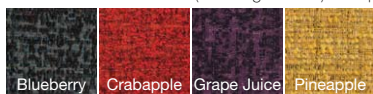
NOLAN Grade 20 (cleaning code S) 88% polyester, 12% cotton



POLO Grade 20 (cleaning code W) 100% polyester



OSCAR Grade 30 (cleaning code S) 54% polyester, 38% cotton, 8% acrylic



SHERLOCK Grade 30 (cleaning code S) 60% polyester, 40% rayon

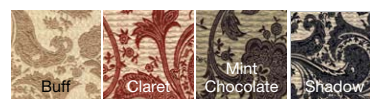


PRINTS & PATTERNS

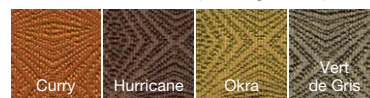
ARGENTINA* Grade 41 (cleaning code S) 48% cotton, 30% polyester, 22% rayon



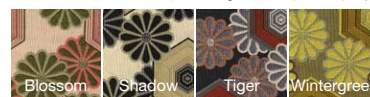
EVA* Grade 41 (cleaning code S) 69% cotton, 31% polyester



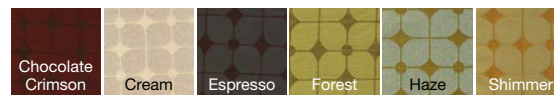
IMANI* Grade 41 (cleaning code S) 62% rayon, 37% polyester, 1% nylon



FUJI* Grade 42 (cleaning code S) 55% polyester, 43% cotton, 2% lurex



MODERNSTAR* Grade 42 (cleaning code S) 51% rayon 49% cotton



SPECIAL FABRIC AND LEATHER CONSIDERATIONS FOR BENCH SEATING:

Several of our seating styles have been designed with a single cushion seat, referred to as a bench seat. With bench seating, relaxation of the fabric or leather will more likely occur over time than with individual seat cushions; the longer the bench cushion, the greater the tendency for the fabric or leather to relax. When selecting your fabric or leather, talk to an EQ3 sales associate about the options and their tendency to naturally stretch.

NOTE:

Our fabric and leather selection continually evolves, see stores for additions, discontinuations and availability.

*Available on select items only. See store for details.